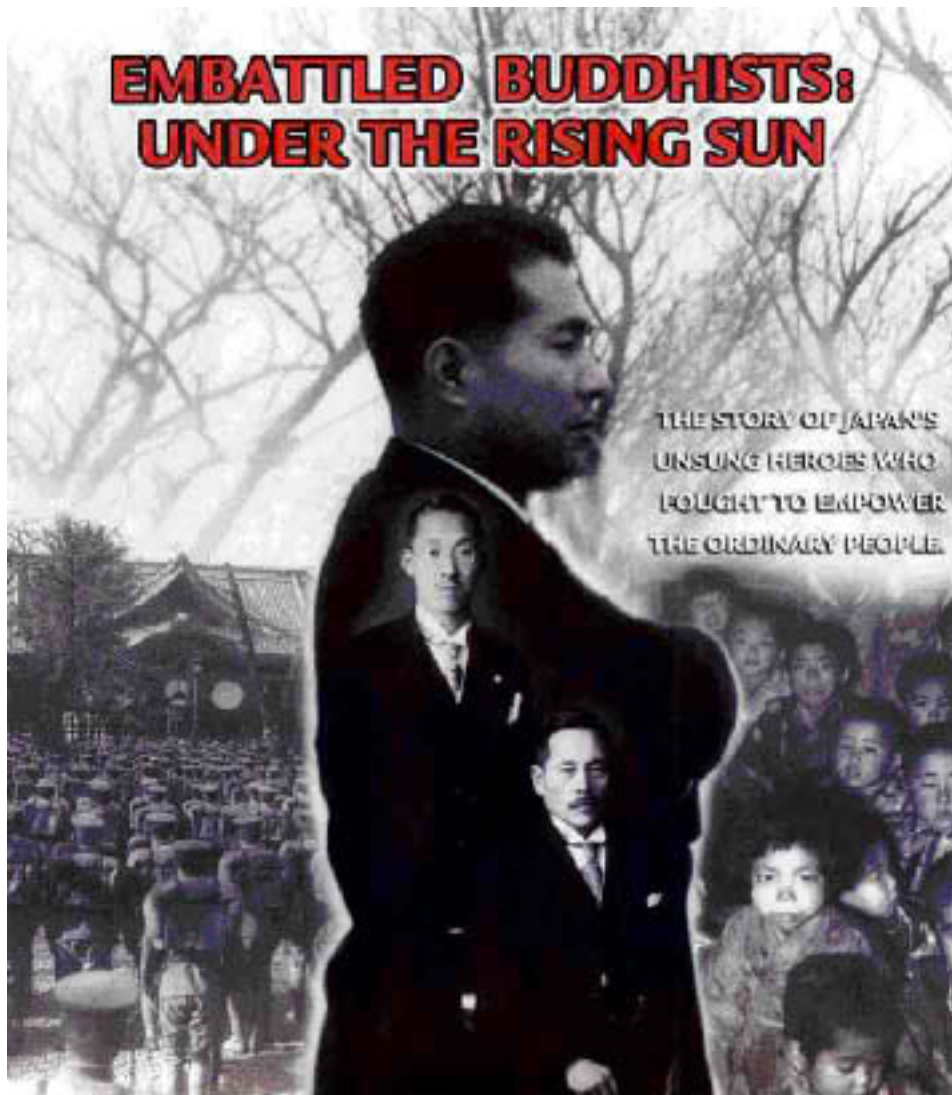


Embattled Buddhists: Under the Rising Sun
to Air in 2 Parts
on KOCE-TV, Sundays, July 20 & 27, at 11:30pm



Embattled Buddhists: Under the Rising Sun, a compelling one-hour documentary on Soka Gakkai's history in post-war Japan produced by Global Management Group, Inc., will be re-broadcast in two parts on two consecutive **Sundays, July 20th and 27th**, on the *Asian America* program. *Embattled Buddhists* demonstrates the spirit of Nichiren and the Soka Gakkai to struggle for the sake of people's happiness. It also portrays the resistance met by the organization in Japan in response to its efforts to oppose state authoritarianism and empower ordinary citizens.

Please check local channel listings for Orange County and Greater Los Angeles at:
http://www.koce.org/whatson/cable_list.cfm



What's On Schedule

What's Airing on KOCE this: [Morning](#) | [Afternoon](#) | [Tonight](#)

[Search for Programs](#)

[KOCE Cable List](#)

[Programs A-Z](#)

[View Whole Month Calendar](#)

[KOCE on Satellite](#)

If you do not have cable or satellite service,
KOCE's over the air channel is 50

[Contact
KOCE](#)



Cable List

KOCE-TV transmits from La Habra Heights on UHF Channel 50. Here is a list of the many cable systems throughout Southern California that carry KOCE. If your cable system does not carry KOCE, please call them to request it.

KOCE-DT Channel 48 now broadcast from its new digital television facility on Mt. Wilson. Permission from the FCC is pending to move KOCE's NTSC (analog) station to Mt. Wilson.

Cable Company	Area(s) Served	Channel
Adelphia	Anaheim, Anaheim Hills, Villa Park	8
Adelphia	Hermosa Beach, Manhattan Beach	50
Adelphia	Brea, La Habra, La Habra Heights	8
Adelphia	Glendora, San Dimas, Monrovia, Bradbury, La Verne, El Monte, Southgate	10
Adelphia	Redondo Beach	50
Adelphia	Beverly Hills, Van Nuys, W. Hollywood, Bell Canyon	50
Adelphia	Santa Monica, Eagle Rock	50
Adelphia	Walnut, Diamond Bar, Rowland Heights, Anaheim, Yorba Linda	8
Adelphia	Arcadia, Sierra Madre	10
Adelphia	Pico Rivera, La Puente, Valinda, Parts of Whittier, South Whittier, Hacienda Heights, Industry, Baldwin Park	10
Adelphia	Highland, East San Bernardino	21
Adelphia	Van Nuys, No. Hollywood, Sherman Oaks, East San Fernando Valley, Pacoima, Sun Valley, North Hills, Parts of Sylmar	19
Comcast	Artesia, Athens, Baldwin Hills, Bell/Cudahy, Bell Gardens	16
Comcast	Hollywood, Culver City, Marina Del Ray, Baldwin Hills, Inglewood, Downtown L.A., Westchester, South Central L.A., Downey, Bell, Paramount, Bellflower, Compton, Carson, Tustin	16
Comcast	Costa Mesa, Cypress, Tustin, parts of San Pedro, Wilmington, South Central L.A., Harbor City, East Torrance, Westchester	16
Buena Vision Telecom-E.L.A.	East Los Angeles/Boyle Heights	50
Catalina Cable Avalon	Avalon	10

Charter Communications	Azusa, City of Pasadena, Monterey Park, Alhambra, West Covina, Commerce, Norwalk, Montebello, Rosemead, Altadena, San Gabriel, Temple City, Monterey Park, Walnut, La Canada	50
Charter	Long Beach, Signal Hill	12
Charter	Duarte	20
Charter	Whittier (within City Limits)	25
Charter	Kinneton Ranch	50
Charter	Huntington Park	50
Comcast Cable	Newport Beach, Corona del Mar	16
Comcast	Santa Ana, Seal Beach, Fullerton, Buena Park, Placentia	16
Cox Cable	Rolling Hills Estates, San Pedro, Rancho Palos Verdes	29
Cox	Newport Beach, Irvine, Tustin Ranch, Orange, Laguna Niguel, San Clemente, San Juan Capistrano, Camp Pendleton, Dana Point, Laguna Beach, Lake Forest, Mission Viejo, Trabuco Canyon, Portola Hills, Rancho Santa Margarita, Aliso Viejo	10
Golden Rain/Foundation Rossmore Electric Cable	Leisure World, Laguna Hills	6
Time Warner Communications	Orange	25
Time Warner	South Pasadena, San Marino	14
Time Warner	Huntington Beach, Rossmore, Fountain Valley, Westminster, Stanton, Midway City	25
Time Warner	Los Alamitos, Garden Grove, Cypress	25
Time Warner	Hawthorne, El Segundo, Lawndale, Gardena, Torrance(rebuild)	25/50
Time Warner	Palm Springs	24
Time Warner	Palm Desert, Rancho Mirage, La Quinta, Indian Wells, Indio, Coachella, Cathedral City	16
Verizon	Cerritos	23